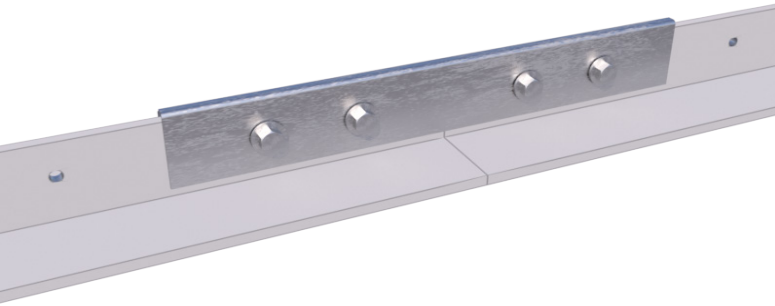




FSI – Aluminum Ceiling Tee (OEM Type)

FSI's Aluminum Ceiling Tee supports suspended architectural ceiling panel systems. The Ceiling Tee is an inverted "T" shape with a 5" wide flange (0.188" thick) and a 0.25" thick stem, available in a 3" vertical leg. It comes pre-drilled at intervals of 12" O.C. on the horizontal flange and 6" O.C. on the vertical flange, for quick installation. Supporting splice plate and accessory kits available. The Ceiling Tee has a proprietary powder coated white finish to match all major panel manufacturers' standard white.



TECHNICAL DATA

PROPERTIES	
Material	6061-T6
Dimensions	Horizontal flange: 5" wide x 3/16" thick Vertical Flange: 3" high x 5/16" thick
Length	16' overall
For Use With	Suspended Ceilings
Color	Bone White
Tensile Strength	42,000 psi
Yield Strength	35,000 psi
Packaging	2 pcs per bundle

3" x 5" Tee Section

Deflection Limit	MAXIMUM UNIFORM LOAD (PLF)				
	4' Span	5' Span	6' Span	7' Span	8' Span
L/180	535	325	185	115	80
L/240	480	245	140	85	60
L/360	320	160	95	55	40
L/480	240	120	70	40	30

WARRANTY: We will warrant the product for (1) one year provided that it meets the specifications that are mutually agreed upon between the manufacturer and the customer.

USES & APPLICATION AREAS

- Supports for suspended ceiling panel
- Fire-rated or general applications
- Controlled Environment
- Commercial Warehouse
- Retail

ADVANTAGES

- Installed as part of a ceiling system which allows plenum access to utilities
- Aircraft Aluminum helps prevent corrosion
- Corrosion resistant
- White, clean look which matches all major ceiling panels
- Twist resistant offering professional grade finish
- Appropriate load carrying capacities